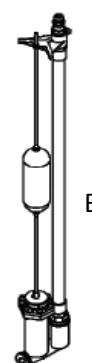
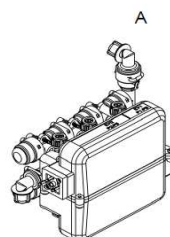
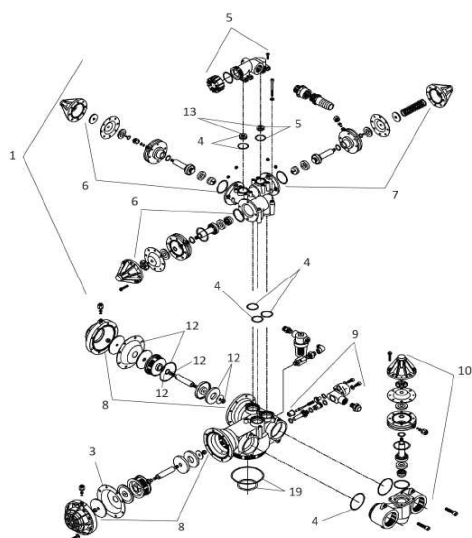


## SOFTENER TYPE : BWT 9000 ALCYO

Greyed items : Service may be included in BWT France maintenance contracts.

Item.	Action	Frequency									Comments	Item numbers for spare or wear parts
		Daily	Weekly	Monthly	Quarterly	Every 6 months	Yearly	Every 2 years	Every 3 years	Every 4 years		
1	Salt refill	x									Depending on soft water consumption	
2	Hardness analysis of feeding water			x							The frequency may be shortened depending on the criticality of the equipment behind the softener.	Analysis set, article number P0001561A
3	Hardness analysis behind the softener			x							The frequency may be shortened depending on the criticality of the equipment behind the softener.	Analysis set, article number P0001561A
4	Chlorine analysis of feeding water (after regeneration)			x							The frequency may be shortened depending on the criticality of the equipment behind the softener.	Analysis set, article number P0029860 (2 to 60 ppm) or strips P0005030 (30 to 600 ppm)
5	Chlorine analysis after the softener (after regeneration)			x							The frequency may be shortened depending on the criticality of the equipment behind the softener.	Analysis set, article number P0029860 (2 to 60 ppm) or strips P0005030 (30 to 600 ppm)
6	Regeneration test				x							
7	Tightness check				x							
8	Replacement of filter for electro-distributor				x						The frequency may be shortened depending on the water quality.	P0003735 (set of 4 sleeves)
9	Internal check of the valve and cleaning					x						
10	Programming check					x						
11	Use of AQACLEAN CT				x		x				The frequency may be shortened depending on the feed water quality.	Depending on softener type
12	Cleaning of brine tank						x				The frequency may be shortened depending on the used salt quality and the water consumption.	
13	Replacement of brine suction tubing							x				P0090365 11x14 (sold per meter)
14	Replacement of pilotes DN 25							x			The frequency may be shortened depending on the pressure, the water quality and the number of regenerations.	2 x (+ 1 if Bypass) P0019007 DN 25 (6) 1 x P0019017 DN 25 (7)
15	Replacement of inlet/outlet valves DN 50								x		The frequency may be shortened depending on the pressure, the water quality and the number of regenerations.	2 x P0070331 (8)
16	Replacement of brine valve								x		The frequency may be shortened depending on the pressure, the water quality and the number of regenerations.	P0014822 (B)
17	Replacement of electro-distributor								x		The frequency may be shortened depending on the pressure, the water quality and the number of regenerations.	P0019016 (A)
18	Replacement of inlet/ outlet flexible hoses									x		P0073390



BWT PERMO  
103 Rue Charles Michels  
93206 Saint Denis Cedex France  
Téléphone : 01 49 22 46 46  
Fax : 01 49 22 46 07

For You and Planet Blue.

