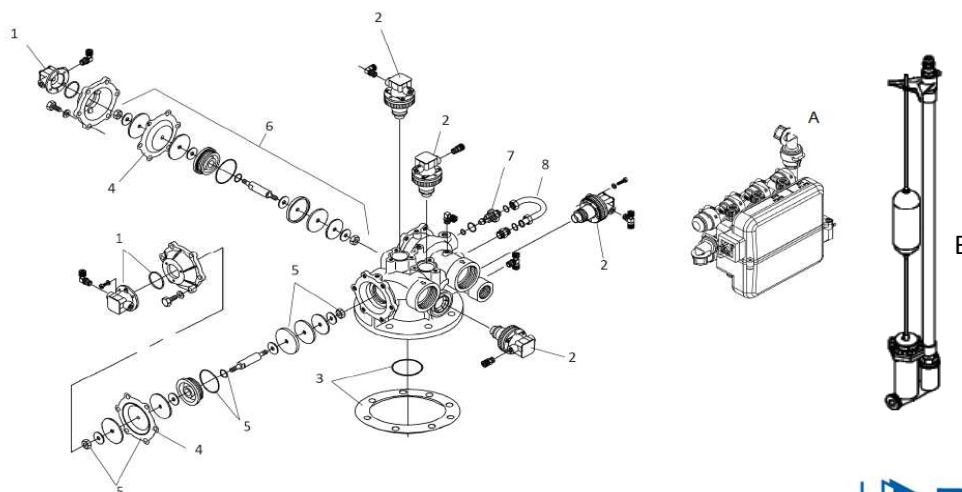


SOFTENER TYPE : **BWT 8000 ALCYO**

Greyed items : Service may be included in BWT France maintenance contracts.

| Item. | Action | Frequency | | | | | | | | | Comments | Item numbers for spare or wear parts |
|-------|---|-----------|--------|---------|-----------|----------------|--------|---------------|---------------|---------------|--|---|
| | | Daily | Weekly | Monthly | Quarterly | Every 6 months | Yearly | Every 2 years | Every 3 years | Every 4 years | | |
| 1 | Salt refill | x | | | | | | | | | Depending on soft water consumption | |
| 2 | Hardness analysis of feeding water | | | x | | | | | | | The frequency may be shortened depending on the criticality of the equipment behind the softener. | Analysis set, article number P0001561A |
| 3 | Hardness analysis behind the softener | | | x | | | | | | | The frequency may be shortened depending on the criticality of the equipment behind the softener. | Analysis set, article number P0001561A |
| 4 | Chlorine analysis of feeding water (after regeneration) | | | x | | | | | | | The frequency may be shortened depending on the criticality of the equipment behind the softener. | Analysis set, article number P0029860 (2 to 60 ppm) or strips P0005030 (30 to 600 ppm) |
| 5 | Chlorine analysis after the softener (after regeneration) | | | x | | | | | | | The frequency may be shortened depending on the criticality of the equipment behind the softener. | Analysis set, article number P0029860 (2 to 60 ppm) or strips P0005030 (30 to 600 ppm) |
| 6 | Regeneration test | | | | x | | | | | | | |
| 7 | Tightness check | | | | x | | | | | | | |
| 8 | Replacement of filter for electro-distributor | | | | x | | | | | | The frequency may be shortened depending on the water quality. | P0003735 (set of 4 sleeves) |
| 9 | Internal check of the valve and cleaning | | | | | x | | | | | | |
| 10 | Programming check | | | | | x | | | | | | |
| 11 | Use of AQACLEAN CT | | | | | x | x | | | | The frequency may be shortened depending on the feed water quality. | Depending on softener type |
| 12 | Cleaning of brine tank | | | | | | x | | | | The frequency may be shortened depending on the used salt quality and the water consumption. | |
| 13 | Replacement of brine suction tubing | | | | | | | x | | | | P0090365 11x14 (sold per meter) |
| 14 | Replacement of pilotes | | | | | | | x | | | The frequency may be shortened depending on the pressure, the water quality and the number of regenerations. | 4 x P0012635 (2) 2 x P0012636 (1) |
| 15 | Replacement of inlet/outlet valves | | | | | | | | x | | The frequency may be shortened depending on the pressure, the water quality and the number of regenerations. | 2 x P0011546 (B) |
| 16 | Replacement of brine valve | | | | | | | | x | | The frequency may be shortened depending on the pressure, the water quality and the number of regenerations. | P0014822 (B) |
| 17 | Replacement of electro-distributor | | | | | | | | x | | The frequency may be shortened depending on the pressure, the water quality and the number of regenerations. | P0019016 (A) |
| 18 | Replacement of inlet/ outlet flexible hoses | | | | | | | | | x | | P0001107 |



BWT PERMO
 103 Rue Charles Michels
 93206 Saint Denis Cedex France
 Téléphone : 01 49 22 46 46
 Fax : 01 49 22 46 07