



Filtering cartridge

AQA PURA

VERY IMPORTANT:

Read this manual carefully before connecting to the mains supply, filling it with water or operating it. Failure to comply with these instructions will invalidate the BWT PERMO warranty.



www.bwtpermo.fr



For You and Planet Blue.



OFFICES

BWT PERMO

SOUTH - WEST OFFICE

Z.A Toussaint Catros - 6 rue Ariane

33185 Le Haillan

Tel.: +33 (0)5 56 13 02 18 - Fax: +33 (0)5 56 55 94 92

bwtpermo.bordeaux@bwt.fr

BWT PERMO

TOULOUSE AREA OFFICE

SOUTH - WEST Office

Tel.: +33 (0)5 56 13 02 18 - Fax: +33 (0)5 56 55 94 92

bwtpermo.bordeaux@bwt.fr

BWT PERMO

SOUTH - EAST OFFICE

138, chemin de l'hôpital

06580 Pegomas

Tel.: +33 (0)4 93 40 59 00 - Fax: +33 (0)4 93 40 59 09

bwtpermo.cannes@bwt.fr

BWT PERMO

DAUPHINÉ - PAYS DE SAVOIE OFFICE

3c, rue Irène Joliot Curie

38320 Eybens-Les-Ruires

Tel.: +33 (0)4 76 14 77 20 - Fax: +33 (0)4 76 14 77 29

bwtpermo.grenoble@bwt.fr

BWT PERMO

NORTH - PICARDY OFFICE

Z.I. - 15 A, rue du Plouvier

59175 Templemars

Tel.: +33 (0)3 20 16 03 80 - Fax: +33 (0)3 20 16 03 89

bwtpermo.lille@bwt.fr

BWT PERMO

RHÔNE - ALPES OFFICE

Les Jardins d'Entreprise - 213, rue de Gerland - bt F1

69344 Lyon cedex 07

Tel.: +33 (0)4 78 72 99 17 - Fax: +33 (0)4 78 72 88 07

bwtpermo.lyon@bwt.fr

BWT PERMO

SOUTH REGION OFFICE

112, Traverse de la Serviane

13012 Marseille

Tel.: +33 (0)4 91 44 87 86 - Fax: +33 (0)4 91 45 25 62

bwtpermo.marseille@bwt.fr

BWT PERMO

MONTPELLIER AREA OFFICE

SOUTH REGION Office

Tel.: +33 (0)4 91 44 87 86 - Fax: +33 (0)4 91 45 25 62

bwtpermo.marseille@bwt.fr

BWT PERMO

CENTRE - WEST OFFICE

10, rue des frères Lumière

37170 Chambray-Lès-Tours

Tel.: +33 (0)2 47 74 74 48 - Fax: +33 (0)2 47 74 74 49

bwtpermo.tours@bwt.fr

BWT PERMO

EAST REGION OFFICE

Technopôle Nancy - Brabois - 2, allée d'Auteuil

54500 Vandoeuvre Lès Nançy

Tel.: +33 (0)3 83 67 61 89 - Fax: +33 (0)3 83 44 65 81

bwtpermo.nancy@bwt.fr

BWT PERMO

BRITTANY - PAYS DE LOIRE OFFICE

Z.A. des 3 prés - 16, rue de la Plaine

35890 Laillé

Tel.: +33 (0)2 23 61 48 50 - Fax: +33 (0)2 23 61 48 51

bwtpermo.rennes@bwt.fr

BWT PERMO

CHAMPAGNE - ARDENNES OFFICE

3, rue Saint-Rémi - Lieu-dit Les Vianneries

51370 Les Mesneux

Tel.: +33 (0)3 26 84 00 52 - Fax: +33 (0)3 26 84 05 04

bwtpermo.reims@bwt.fr

BWT PERMO

NORMANDY OFFICE

Z.A Écoparc 2 - allée de la Fosse Moret

27400 Heudebouville

Tel.: +33 (0)2 32 63 32 32 - Fax: +33 (0)2 32 63 32 30

bwtpermo.rouen@bwt.fr

BWT PERMO

ILE DE FRANCE OFFICE

191, rue du 1er mai - Hall n°3

92000 Nanterre

Tel.: +33 (0)1 46 49 01 01 - Fax: +33 (0)1 46 49 50 69

bwtpermo.idf@bwt.fr

BWT PERMO

EXPORT DEPARTMENT

103, rue Charles Michels

93206 Saint-Denis Cedex

Tel.: +33 (0)1 49 22 46 51 / 48 - Fax: +33 (0)1 49 22 45 30

bwtexport@bwt.fr

BWT PERMO

INDIAN OCEAN OFFICE

ZAC du Portail - 9, rue de l'usine

97424 PITON SAINT LEU

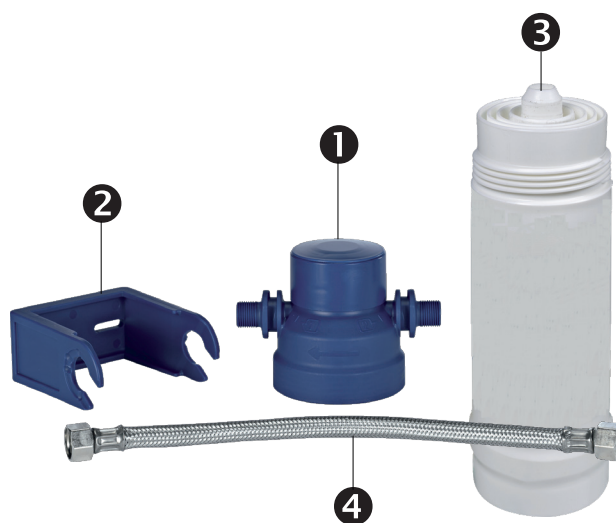
Tel.: +262 262 32 52 77 - Fax: +262 262 22 77 46

TECHNICAL DESCRIPTION

The **AQA PURA** filtering cartridge is made up of the following parts:

- a filter head (1) with its mounting bracket (2)
- an **AQA PURA** filtering cartridge (3) with protective lid
- a 300 mm connection pipe (3/8" x 3/8") (4)

As part of our constant effort to maintain hygiene standards, all the parts are packed in a protective film.



TECHNICAL CHARACTERISTICS

Cartridge weight when dry 0.55 kg

Cartridge weight when installed 1.0 kg

Connection thread (intake/discharge) 3/8"

Nominal flow rate 180 l/hr

Minimum operating pressure 2 bar / Max. 8 bar

Feed water pressure > 1.2 bar

Pressure loss:

- at a flow of 30 l/hr 0.1 bar
- at a flow of 60 l/hr 0.15 bar
- at a flow of 100 l/hr 0.6 bar

Min water temperature + 4°C / max. + 30°C

Min. ambient temperature + 4°C / max. + 40°C

Dry cartridge ambient temperature:

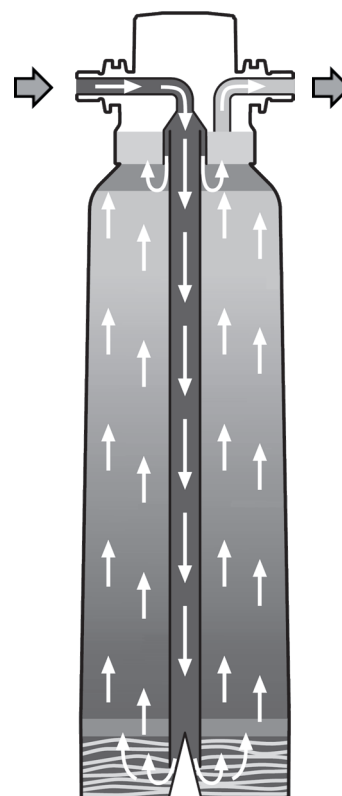
- storage min. - 20°C / max. + 40°C
- transport min. - 20°C / max. + 40°C

Nominal capacity (*) 10,000 litres

Filtration of particles >5 µm

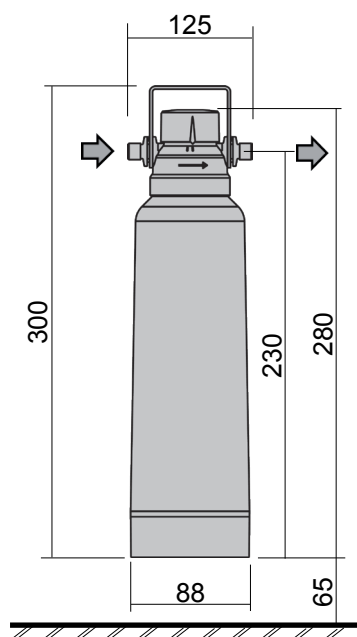
Vertical assembly position

Operation principle diagram

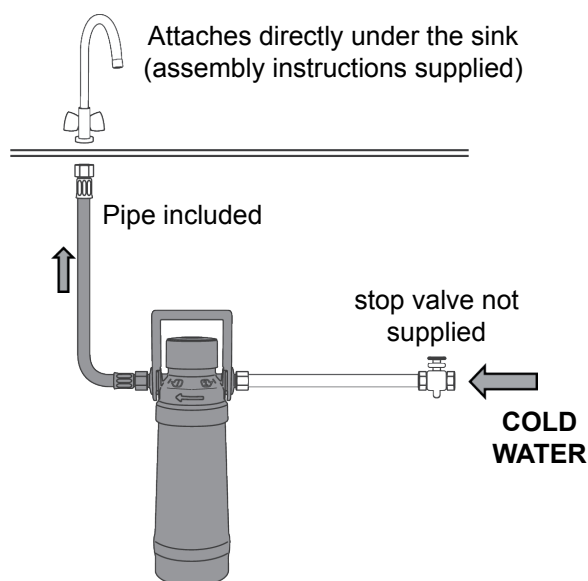


(*) The capacity can vary according to the quality of the water to be treated.

DIMENSIONS & INSTALLATION



Dimensional characteristics
(in millimetres)



Installation diagram

The **AQA PURA** filtering cartridge should only be fed with cold water, respecting the quality requirements for water intended for human consumption.

It is attached directly to the cold water inlet under the sink.

FITTING

Choose an installation space that enables a simple connection to the water supply network.

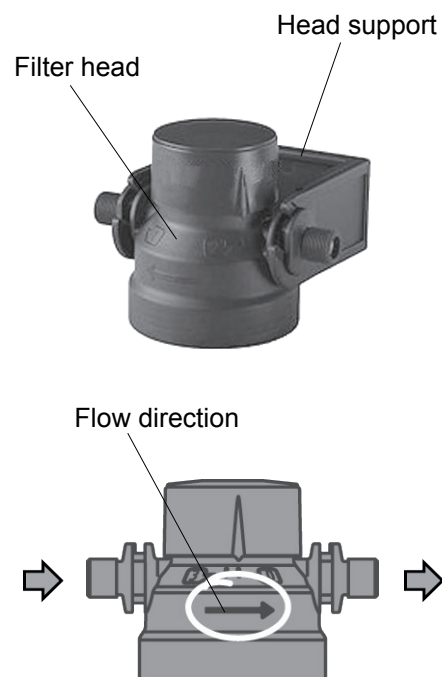
Make sure you leave enough space for fitting and replacing the cartridge (at least 65 mm) - see dimensional characteristics above.

Close the water inlet tap.

Decompress by turning the sink tap on to cold.

Attach the filter head support in the correct place.

Install the filter head in the support, after checking that the flow direction is correct (arrow on the head).



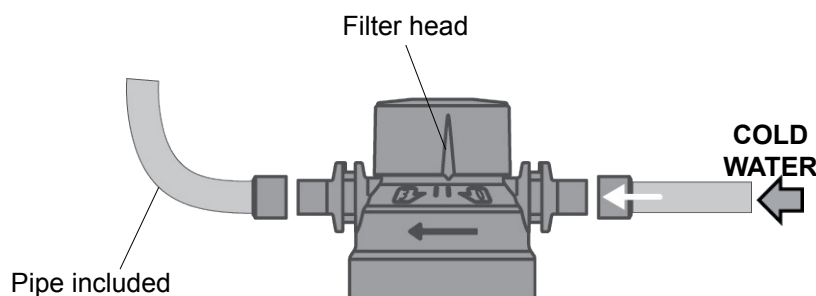
Fit the filter head at the water inlet.

Tighten moderately so as not to damage the filter head.

Do not use paste, oakum or teflon strips.

The rubber joint should be sufficient to make it water-tight.

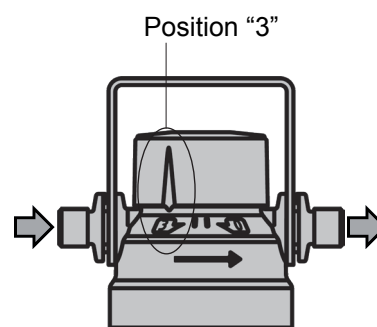
Connect the water outlet pipe included, between the filter and the tap.



NB:

The head of your **AQA PURA** filter is held in position "3" during manufacturing, corresponding to the active carbon cartridge supplied.

Do not try to position it differently.



Open the stop tap slowly and check that the system is water-tight.

Once the water-tightness has been checked, slowly open the water tap after the cartridge and bleed the cartridge to evacuate the air, draw at least 4 to 5 litres of water.

Once the pipe and/or tubing connection to the filter head has been completed, screw the cartridge tightly onto the filter head.

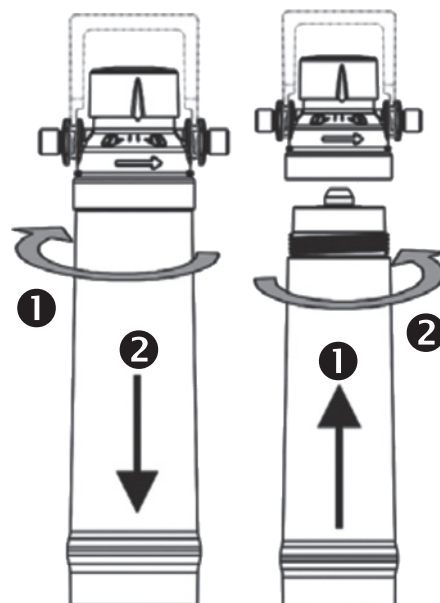
Your **AQA PURA** filter is ready for use.

User precautions

The pressure should not exceed a value of 8 bar static.

If it is greater than this, above 6 bar we recommend the installation of a pressure reducer upstream from the filtering system.

The filter head should under no circumstances be subjected to extended pressure from the water mains on its own (without a filtering cartridge installed).



CARTRIDGE MAINTENANCE

Maintaining the AQA PURA cartridge

To enjoy optimum filtering and for pleasant-tasting water every day, the filtering cartridge should be replaced every year or when the nominal capacity has been reached (10,000 litres).

However, **BWT Permo** recommends a change every 6 months owing to the potential variations in the quality of drinking water.

In the event of stagnation for over 4 weeks, we recommend that you replace the cartridge with a new one.

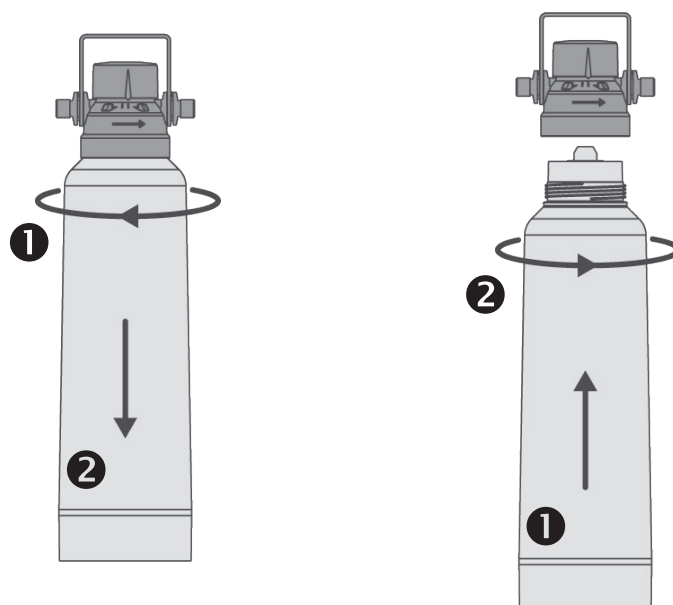
A device integrated in the filter head prevents water from flowing through if no cartridge is fitted to the head.

REPLACING THE CARTRIDGE

Close the water stop tap in front of the cartridge and open the water tap after the cartridge to drop the level, then close.

Remove the filtering cartridge from the filter head by unscrewing it clockwise.

The filter head pivots 90° on the filter support bracket to assist with disassembly of the filtering cartridge.



Proceed with the installation of the new filtering cartridge as described.

Slowly open the stop tap before the cartridge.

Upon first use, the filtering cartridge should be rinsed and flushed. Leave at least 4 or 5 litres of water to flow.

Used cartridges can be thrown away in the dustbin (household waste).

To enable your filtering cartridge to operate properly, **BWT Permo** recommends that you take the following measures:

- Ensure hygiene and cleanliness during filtering cartridge replacement.
- Avoid handling the parts of the cartridge in contact with the water.
- Clean the external part of the system regularly using a cloth and slightly soapy water.
- Do not use acidic or alkaline chemicals to clean the device. Do not use solvents.
- Only use slightly soapy water.
- Avoid the use of corrosive chemicals and aggressive cleaning products.

INCIDENTS, CAUSES & SOLUTIONS

If your device is not operating correctly, check the following points. You can also contact our Customer Service Department for assistance.

Incidents	Causes	Solutions
No treated water at outlet	Water inlet cut off or other stop taps closed.	Inspect the stop taps and open them if necessary.
	Filter badly screwed on the head	Unscrew the filter a half-turn then tighten fully
	Filter head incorrectly fitted	Check the direction of flow (direction arrow on the filter head) and reverse if necessary.
Weak water flow	System pressure too low	Check the system pressure
Leak in the water stop device (Aquastop) when the cartridge is disassembled.	Deposit of foreign bodies in the Aquastop device.	Rinse the system with the filter fitted
Leak at the joints	Defective joints	Inspect the joint and replace it if necessary.
Presence of air bubbles	Insufficient bleed	Restart bleed operation

The BWT group

Best Water Technology Group was founded in 1990, and is now one of the leading European water technology companies. It has 70 subsidiaries and affiliated companies, with total staff of over 2800. although the BWT network also comprises thousands of partner companies, service providers, installers, planners, architects and hygiene specialists. The staff in the Research and Development department work on new processes and equipment, using state of the art techniques, with the aim of developing new products that are both environmentally-friendly and cost-effective. BWT is particularly committed to the reduction of energy consumption and CO2 emissions. BWT revolutionary products are present, and have already more than proved their effectiveness, in almost every field where water is involved: whether at the entry of a water pipe into a building, the "Point of entry", or where water is finally drawn, the "Point of use". Whether this is for the treatment of drinking water, mineral water or demineralised water for pharmaceutical applications, swimming pools, heating and process water, water for boilers and cooling water, and even water for air conditioning.

A multitude of innovations which ensure maximum safety, hygiene and health protection for our customers during their daily contacts with water, that precious elixir of life. Amongst these innovations, in particular we find SEPTRON®, the world's first EDI (electro-deionisation) module, which is fitted with spiral winding, the MDA process (activation of manganese oxide), to effectively eliminate manganese, total AQA bipolar technology, which offers protection against calcium carbonate, without the addition of chemicals, SANISAL, the world's first regenerating salt for water softening installations, which simultaneously disinfects the water, and the revolutionary new Mg2+ technology, which gives both filtered water, along with tea and coffee, a better taste. With its unique high yield membranes for fuel cells and batteries, BWT offers a cleaner, more sustainable energy solution in the 21st century.

BWT – For You and Planet Blue: our mission is to fulfil the environmental, economic and social responsibility to supply our customers with the best water treatment products, systems, technologies and services, and so contribute to the most effective protection of the global resources of our blue planet.



For You and Planet Blue.